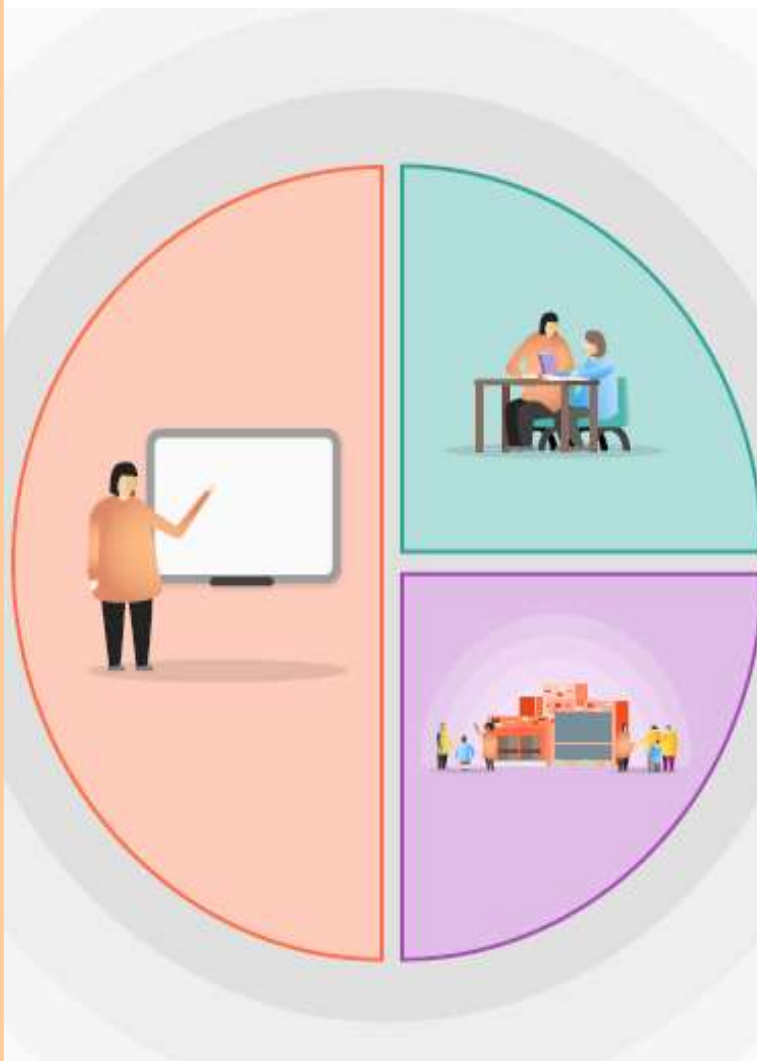


Teaching

- Implement a new cycle for reading, writing, maths and RE which incorporates identified missed content. Teaching to ensure that all foundations are secure before moving on.
- Immersion Curriculum: Identify missed skills and knowledge. Use these plans to weave missed content into the curriculum through homework, quizzes, assemblies and linking with current Immersion Curriculum plans.
- Continue to support pupils' knowledge through the departmental construction of knowledge organisers for each cycle.
- Frequent low-stakes testing to ensure all pupils, and in particular disadvantaged students, experience success and celebrate the acquisition of knowledge.
- Teachers incorporate Remote Learning within their lessons to build pupils confidence with using the system.
- Continue with the scaffolding approach in reading, writing and maths. CPD to recognise how this method supports learning alongside effective modelling.
- Revisit AFL techniques that can support identifying when learning has been lost or misunderstood.

A Tiered Approach to Academic Planning for Catch-up Curriculum: 2020-21



Targeted Academic Support

- Employ an additional teacher to work alongside class teachers to provide instant interventions for pupils.
- Same-day in-class intervention.
- Teacher-led targeted group teaching for Year 5 and Year 6 pupils.
- Specific intervention programmes led by both Teachers and Teaching Assistants.

Additional Spending: Additional teacher employed for 3 mornings a week to work in the KS 2 classes. Teacher to work alongside teachers to deliver quality first teaching. A mixture of class, group and 1:1 support will be provided. In addition, children have been identified to receive tutoring after school.

Wider Strategies

- Continue to deliver worships that focus upon leading fruitful lives and supporting spiritual growth.
- Pupils and staff given the opportunity for regular reflection.
- All staff to be available at the start and end of day to talk with parents who have concerns/issues.
- Continue to recognise the importance of staff well-being with buddy system and opportunities to discuss feelings.
- Fridays to be an active day for pupils with outdoor learning and PE.